

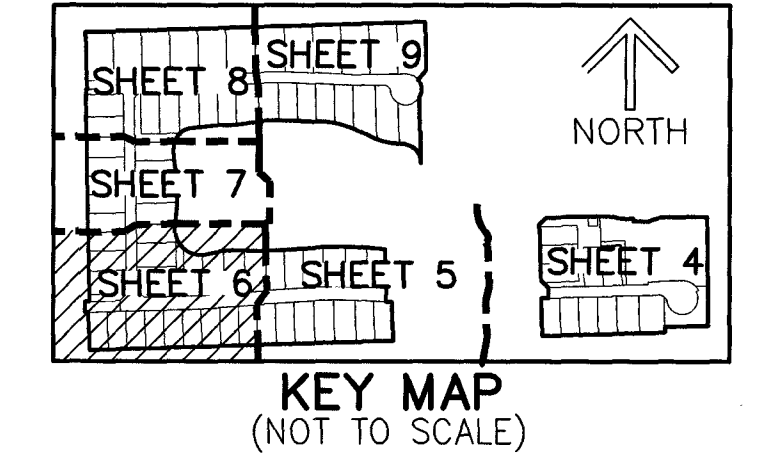
THIS INSTRUMENT PREPARED BY
DAVID P. LINDLEY
 OF
CAULFIELD & WHEELER, INC.
 SURVEYORS - ENGINEERS - PLANNERS
 7900 GLADES ROAD, SUITE 100
 BOCA RATON, FLORIDA 33434 - (561)392-1991

NOTES
COORDINATES, BEARINGS AND DISTANCES
 COORDINATES SHOWN ARE GRID
 DATUM = NAD 83 1990 ADJUSTMENT
 ZONE = FLORIDA EAST
 LINEAR UNIT = U.S. SURVEY FEET
 COORDINATE SYSTEM 1983 STATE PLANE
 TRANSVERSE MERCATOR PROJECTION
 ALL DISTANCES ARE GROUND UNLESS OTHERWISE NOTED
 SCALE FACTOR = 1.000016951
 GROUND DISTANCE X SCALE FACTOR = GRID DISTANCE
 BEARINGS AS SHOWN HEREON ARE GRID DATUM,
 NAD 83 (1990 ADJUSTMENT), FLORIDA EAST ZONE.

VERDURA FARMS, PUD PLAT 2

BEING A REPLAT OF ALL OF PARCELS A, B AND C, VERDURA FARMS PUD, ACCORDING TO THE PLAT THEREOF,
 AS RECORDED IN PLAT BOOK 140, PAGES 142 THROUGH 157 OF THE PUBLIC RECORDS OF PALM BEACH COUNTY, FLORIDA,
 LYING IN SECTION 12, TOWNSHIP 45 SOUTH, RANGE 41 EAST, PALM BEACH COUNTY, FLORIDA.

MATCHLINE
SEE SHEET 7



8

MATCHLINE
SEE SHEET 7



SHEET 6 Of 9

MATCHLINE
SEE SHEET 5

- LEGEND/ABBREVIATIONS:**
- P.B. - PLAT BOOK
 - O.R.B. - OFFICIAL RECORDS BOOK
 - PG(S). - PAGE(S)
 - Δ - DELTA (CENTRAL ANGLE)
 - CB - CHORD BEARING
 - CD - CHORD DISTANCE
 - R - RADIUS
 - L - ARC LENGTH
 - C - CENTERLINE
 - E - EASTING (WHEN USED WITH COORDINATES)
 - N - NORTHING (WHEN USED WITH COORDINATES)
 - DE - DRAINAGE EASEMENT
 - LME - LAKE MAINTENANCE EASEMENT
 - LOP - LIMITS OF PLAT
 - PBCUE - PALM BEACH COUNTY UTILITY EASEMENT
 - R/W - RIGHT-OF-WAY
 - UE - UTILITY EASEMENT
 - 12-45-41 - SECTION 12, TOWNSHIP 45 SOUTH, RANGE 41 EAST
 - PUD - PLANNED UNIT DEVELOPMENT
 - PC - POINT OF CURVATURE
 - PT - POINT OF TANGENCY
 - PNT - POINT OF NON-TANGENCY
 - PRC - POINT OF REVERSE CURVATURE
 - LWDD - LAKE WORTH DRAINAGE DISTRICT
 - LB - LICENSED BUSINESS
 - FDOT - FLORIDA DEPARTMENT OF TRANSPORTATION
 - PRAS - PRIVATE RESIDENTIAL ACCESS STREET
 - NAD - NORTH AMERICAN DATUM
 - PRM - PERMANENT REFERENCE MONUMENT
 - FPL - FLORIDA POWER & LIGHT COMPANY
 - PRM - DENOTES SET PERMANENT REFERENCE MONUMENT 4" x 4" x 24" CONCRETE MONUMENT WITH ALUMINUM DISK STAMPED "CAW PRM LB3591", UNLESS OTHERWISE INDICATED
 - PCP - DENOTES SET PERMANENT CONTROL POINT NAIL AND METAL DISK STAMPED "PCP LB3591"
 - ▲ - DENOTES SET PERMANENT REFERENCE MONUMENT NAIL AND DISC STAMPED "PRM" LB 3591
 - (P) - VERDURA FARMS PUD (PLAT BOOK 140, PAGES 142-157)

MATCHLINE
SEE SHEET 5

